



RURAL 2020

Migration and Integration in Finland



The European Agricultural Fund
for Rural Development:
Europe investing in rural areas

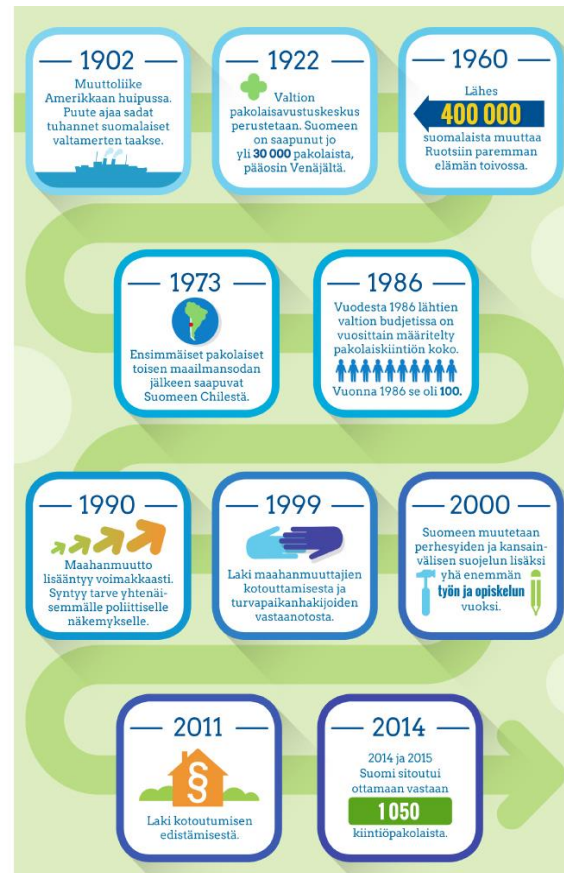


LEADER

AISAPARI

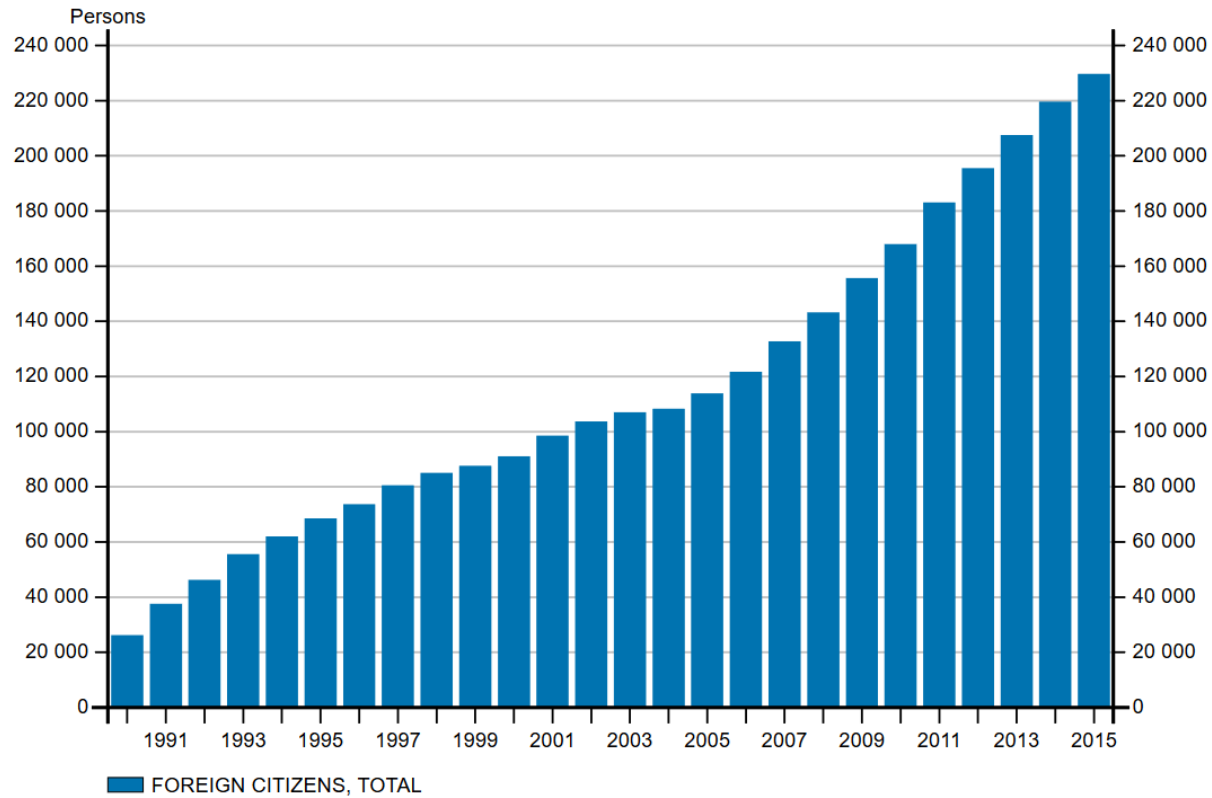
A short history of migration in Finland

- 370 000 Finns left Finland and moved to North America between years 1860 and 1944. Year 1902 was the top-year
- 1922 30 000 refugees from Russia
- Finns moving to Sweden: 1960s was the top decade
- 1973 first refugees (after the second world war)
- 1986: The first quota of refugees was 100 / year
- 1990s: Increasing immigration
- 1999: A law about integration and welcoming asylum seekers
- 2000: More and more immigration because of work and studies
- 2011: A law about integration
- 2014: The refugee quota is 1050 people.



Migration in Finland

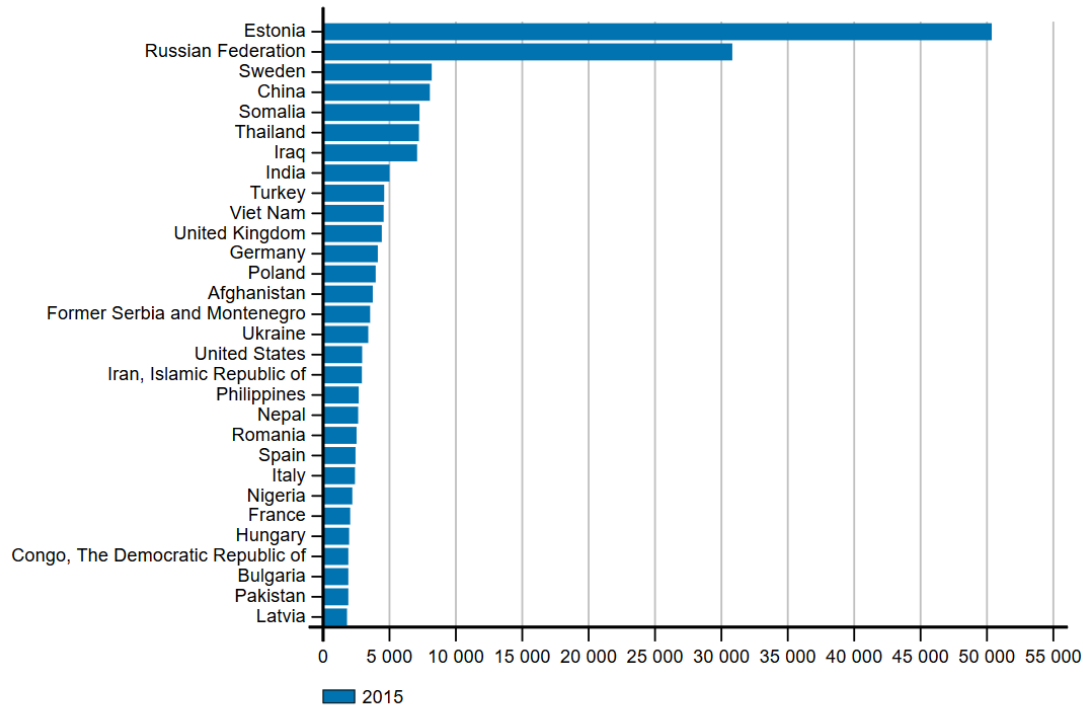
Population by citizenship 1990-2015
FOREIGN CITIZENS, TOTAL



Statistics Finland / Population structure

Foreign citizens in Finland

Biggest nationality groups 2015



Statistics Finland / Population structure

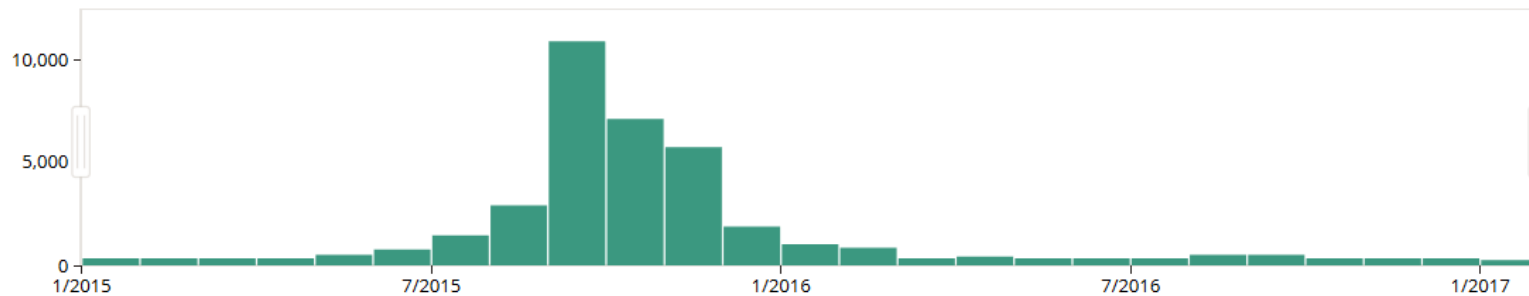
Asylum seekers 2015-

International protection

Applications 1/2015 - 1/2017

In total 38,400

According to European Union directives and the Finnish Aliens Act, international protection is defined as refugee status or subsidiary protection status. Those who receive a positive decision also receive a residence permit.

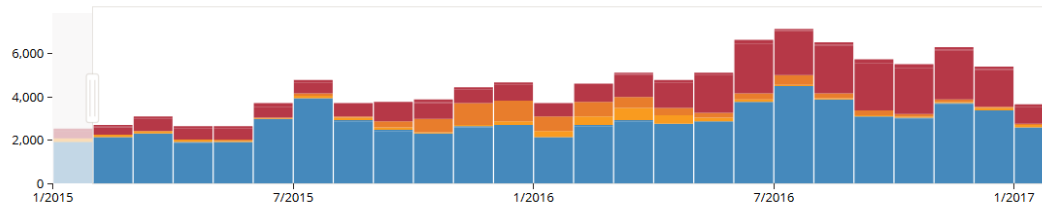


Decisions

2/2015 - 1/2017

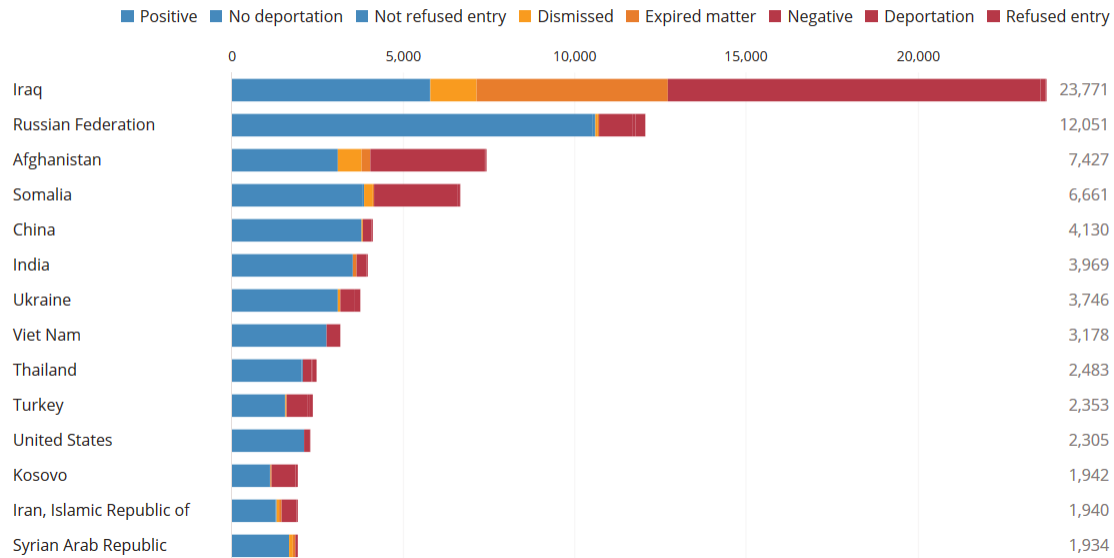
In total 110,318

Here, you will find decisions made by the Finnish Immigration Service concerning residence permits, international protection, citizenship and removal from the country. The statistics show decisions entered in the register during the month in question. The statistics on applications and decisions cannot be compared with each other. For example, applications instituted in January are not decided on in January of the same year.



Citizenship i

RELATIVE [DOWNLOAD CSV](#)



Integration process in Finland



The Ministry of Economic Affairs and Employment is responsible for

- integration of immigrants,
- integration legislation and
- promotion of the employment of immigrants.

The following actors are responsible for promoting the integration of immigrants in their own administrative branches:

- Ministry of the Interior,
- Ministry of Education and Culture,
- Ministry of Social Affairs and Health,
- Ministry of Justice,
- Ministry for Foreign Affairs,
- Finnish Immigration Service,
- Finnish National Board of Education,
- Advisory Board for Ethnic Relations (ETNO) and
- Non-Discrimination Ombudsman

ELY Centers have regional responsibility for integration of immigrants

Centers for Economic Development, Transport and the Environment (ELY Centers) are responsible for integration of immigrants at regional level. ELY Centers

- support municipalities
- steer Employment and Economic Development Offices (TE Offices) in integration matters
- conclude agreements with municipalities on the allocation of persons receiving international protection into municipalities.

Municipalities are responsible for integration of immigrants at local level

Municipalities have overall and coordination responsibility for integration of immigrants at local level. In cooperation with other local actors, municipalities prepare **integration programmes** for promoting integration and strengthening cooperation.

Other actors

- TE Offices (“employment offices”) : main responsibility for integrating immigrants who have registered as job-seekers.

Civil society actors:

- Many NGOs and religious communities provide activities and services
- Immigrants living in Finland have associations of their own.
- Participation in the activities of sports clubs and other leisure activities